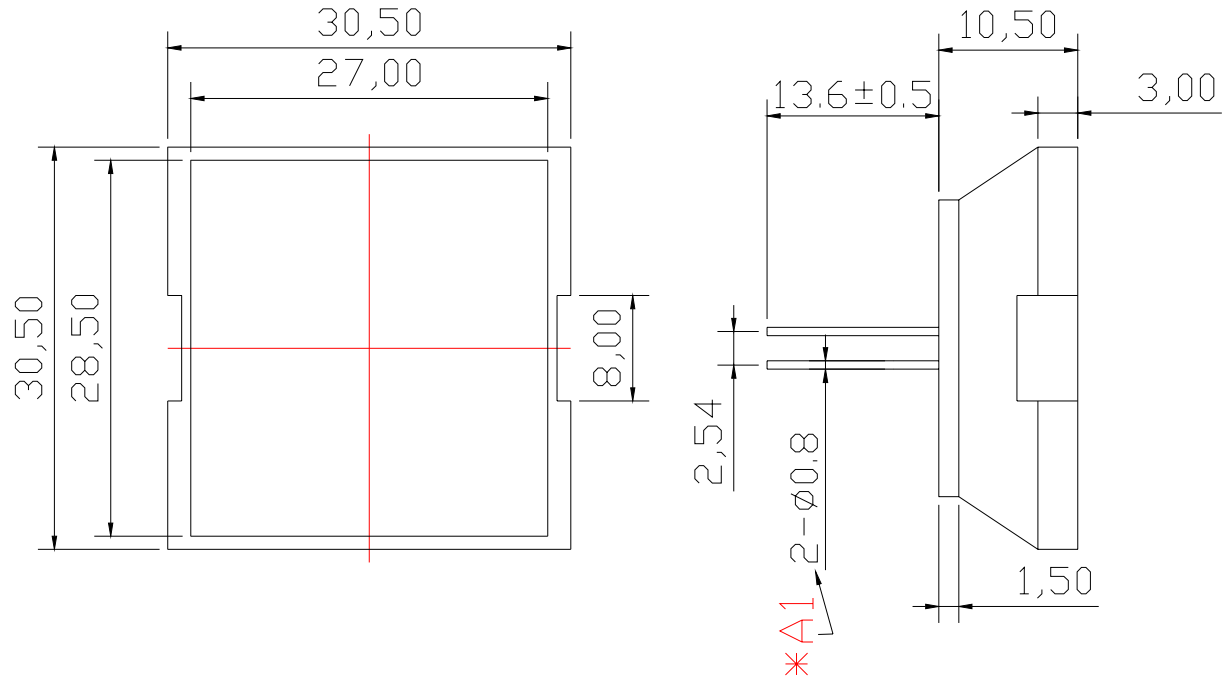


8041-G**SPECIFICATION**

WCN			CUSTOMER Confirmed
Prepared by	Checked by	Approved by	
Liu 2014-4-30	Athena		
NOTE: PIN Dimension from 0.64*0.64 change to $\Phi 0.8$			

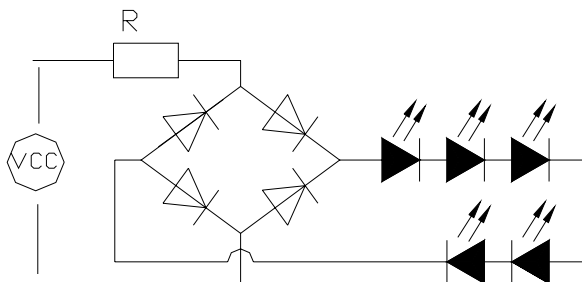
RoHS**REVISION:A1**

Outer Dimension:



Notes: Unless otherwise stated, The tolerance is $\pm 0.25\text{mm}$.

Circuit Diagram



Features:

- High Reliability
- Emitting Color: Green
- Low Power Requirement
- Easy Assembly

Description:

- 30.5 mm Square LED Signal Lamp
- Five Pieces Green Color LED
- Green Diffuse Epoxy

Applications:

- Illuminations
- Indicator



WCN Opto Group Co., Limited

■ Typical Electrical & Optical Characteristics (Ta = 25°C)

Items	Symbol	Condition	Min.	Typ.	Max.	Unit
Forward Voltage	V_F	$I_F = 15\text{mA}$	---	24	---	V
Forward Current	I_F	$V_F = 24\text{V}$	---	15	20	mA
Peak Forward Current	I_{FP}	1/10 duty 10KHZ	---	---	90	mA
Power Dissipation	P_D	---	---	---	500	mW
Luminous Intensity	I_V	$I_F = 20\text{mA}$	400	500	---	mcd
Peak Emission Wavelength	λ_p	$I_F = 20\text{mA}$	---	515	---	nm
Dominant Wavelength	λ_d	$I_F = 20\text{mA}$	---	522	---	nm
Operation Temperature	T_{opr}	-35 ~ + 85				°C
Storage Temperature	T_{stg}	-35 ~ + 85				°C
Lead Soldering Temperature	T_{sol}	Max.260°C for 3 sec Max. (3mm from the base of the epoxy bulb)				

■ Packaging Standard:

■ Data is subject to change without prior notice.