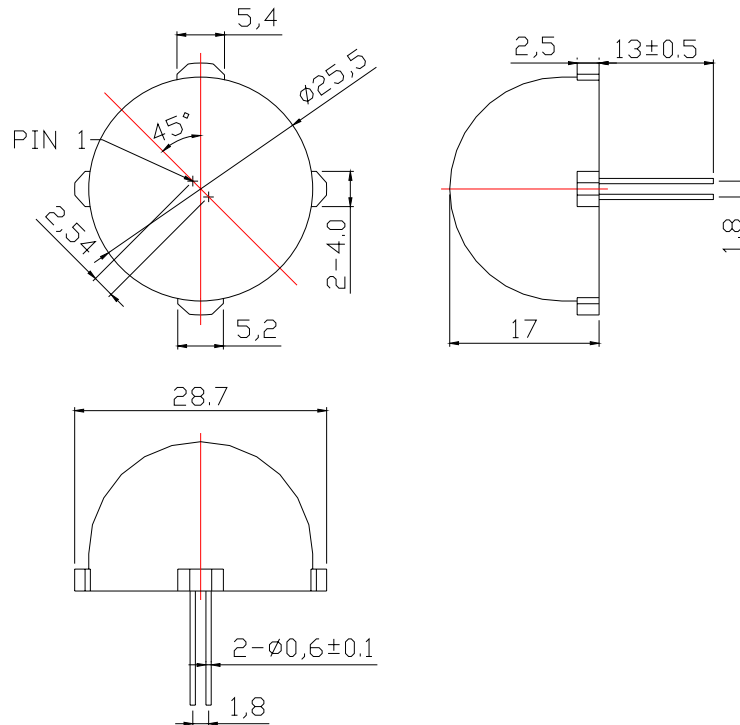


**1030-W****SPECIFICATION**

| WCN               |            |             | CUSTOMER<br>Confirmed |
|-------------------|------------|-------------|-----------------------|
| Prepared by       | Checked by | Approved by |                       |
| Liu<br>2012-12-23 | Athena     |             |                       |

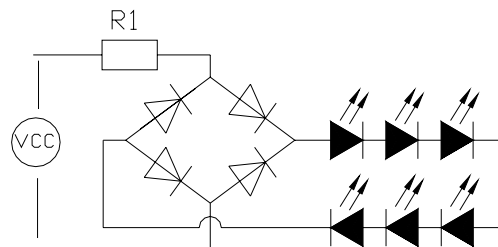
**REVISION: A1**

## Outer Dimension:



Notes: Unless otherwise stated, The tolerance is  $\pm 0.25\text{mm}$ .

## Circuit Diagram



## Features:

- High Reliability
- Emitting Color: Orange
- Low Power Requirement
- Easy Assembly

## Description:

- 30.5 mm LED Signal Lamp
- Six Pieces Orange Color LED
- White Diffuse Epoxy

## Applications:

- Illuminations
- Indicator

## ■ Typical Electrical & Optical Characteristics ( Ta = 25°C)

| Items                      | Symbol      | Condition   | Min. | Typ. | Max. | Unit |
|----------------------------|-------------|---|------|------|------|------|
| Forward Voltage            | $V_F$       | $I_F = 17\text{mA}$   | ---  | 24   | ---  | V    |
| Forward Current            | $I_F$       | $V_F = 24\text{V}$  | ---  | 17   | 20   | mA   |
| Peak Forward Current       | $I_{FP}$    | 1/10 duty<br>10KHZ  | ---  | ---  | 90   | mA   |
| Power Dissipation          | $P_D$       | ---   | ---  | ---  | 500  | mW   |
| Luminous Intensity         | $I_V$       | $I_F = 20\text{mA}$   | 210  | 240  | ---  | mcd  |
| Peak Emission Wavelength   | $\lambda_p$ | $I_F = 20\text{mA}$   | ---  | 612  | ---  | nm   |
| Dominant Wavelength        | $\lambda_d$ | $I_F = 20\text{mA}$   | ---  | 606  | ---  | nm   |
| Operation Temperature      | $T_{opr}$   | -35 ~ + 85  |      |      |      | °C   |
| Storage Temperature        | $T_{stg}$   | -35 ~ + 85  |      |      |      | °C   |
| Lead Soldering Temperature | $T_{sol}$   | Max.260°C for 3 sec Max.<br>(3mm from the base of the epoxy bulb) |      |      |      |      |

## ■ Packaging Standard:

1. The Outer Carton outer dimensions are: 550\*370\*270mm.
2. The Inner Carton outer dimensions are: 370\*360\*255mm
3. The Antistatic Bag dimensions are: 200\*160mm
4. One Outer Carton contained two Inner Cartons and 2400 PCS products.
5. One Inner Carton contained 1200 PCS products.
6. One Antistatic Bag contained 50 PCS products.

■ Data is subject to change without prior notice.

## ■ Revision Record

A0: New Version issued. (2012-7-3)

A1: Change PIN Location and PIN Dimension. (2012-12-23)