



**WCN Opto Group Co., Limited**

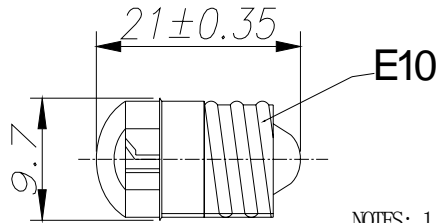
# **WCN-E10D24-B**

## **SPECIFICATION**

<b>WCN</b>			<b>CUSTOMER</b>
<b>Prepared by</b>	<b>Checked by</b>	<b>Approved by</b>	<b>Confirmed</b>
<b>Fei</b> <b>2016-6-29</b>	<b>Athena</b>		
<b>REVISION RECORD</b>			

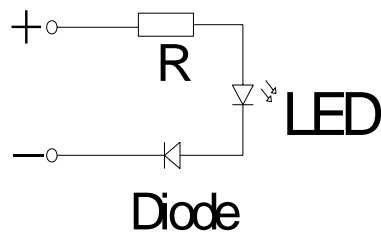


**REVISION:A0**

**Outer Dimension and Circuit Diagram:**

NOTES: 1. ALL DIMENSIONS ARE IN mm , TOLERANCE IS  $\pm 0.25$ , UNLESS OTHERWISE NOTED.

2. AN EPOXY MENISCUS MAY EXTEND ABOUT 1.5mm DOWN THE LEADS.



Notes: Unless otherwise stated, the tolerance is  $\pm 0.25$ mm.

**Features:**

- High Reliability
- Emitting Color: Blue
- Low Power Requirement
- Easy Assembly

**Description:**

- LED Signal Lamp
- One Pieces Blue Color LED
- Blue Epoxy with Water Clear Cover
- LED Base: E10

**Applications:**

- Illuminations
- Indicator





## WCN Opto Group Co., Limited

### ■ Typical Electrical & Optical Characteristics (Ta = 25°C)

Items	Symbol	Condition	Min.	Typ.	Max.	Unit
Forward Voltage	$V_F$	$I_F = 10\text{mA}$	---	DC24	---	V
Forward Current	$I_F$	$V_F = 24\text{V}$	---	---	10	mA
Peak Forward Current	$I_{FP}$	1/10 duty 10KHZ	---	---	90	mA
Power Dissipation	$P_D$	---	---	---	240	mW
Luminous Intensity	$I_V$	$I_F = 10\text{mA}$	120	200	---	mcd
Peak Emission Wavelength	$\lambda_p$	$I_F = 10\text{mA}$	---	460	---	nm
Dominant Wavelength	$\lambda_d$	$I_F = 10\text{mA}$	---	470	---	nm
Operation	$T_{opr}$	-35 ~ + 85				°C
Storage Temperature	$T_{stg}$	-35 ~ + 85				°C

■ Data is subject to change without prior notice.